

IMAGES WORKSHOP

QUICK FIND

<i>Plan to Scan</i>	1
<i>Capture (Scan)</i>	2
<i>Edit</i>	3
<i>Save Your Files</i>	4
Creative Tips	
<ul style="list-style-type: none"> • Think about what you can scan! For example, try scanning bubble wrap, tree bark or crumpled waxed paper. • Then, use this new scan as a background image. • When you've mastered an images program, try changing the colors! 	

PLAN TO SCAN

Action	Troubleshooting Tip
Different flatbed scanners turn on in a variety of different ways. For example, some turn on by lifting the cover while others have a button to turn them on and off	Troubleshoot by looking at all the options that might have to do with turning your scanner on. Lift cover, check on and off switch, check power cord cabling, check scan software.
What objects can you scan? There are a number of different objects you can scan. Occasionally, with 3-d objects, you may get a black background, however.	Tape or glue small objects on paper to eliminate reflections in backgrounds
Where do I orient the image on the scanner? Does it align left or right?	Look for arrows and hatches on your scanner

SCANNERS



Hewlett Packard Scanner



Canon CanoScan Scanner



Visioneer One Touch Scanner

GLOSSARY

Image Resolution The resolution of a bitmapped image measured in pixels per inch.

Index Color A method of displaying color images where the palette of available color is limited to 256 colors or fewer Layers.

DPI Dots Per Inch; the resolution of an output device.

PPI Pixels Per Inch; the resolution of a bitmapped image or image on computer.

UCR Under Color Removal; a method used to save ink costs. Grey, which would be made from a combination of CMY color, is replaced with a percentage of black ink.

CMYK Cyan, magenta, yellow, black. The standard color model for professional printing applications.

BEFORE YOU SCAN

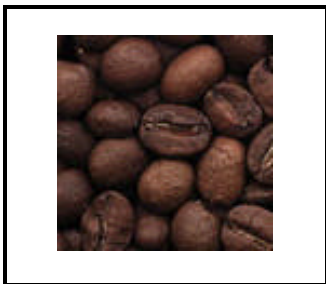
Don't forget to think about:

How will I use this image?
 How will I modify images?
 Does the image tell story?
 Is there extraneous info?
 Are there distracting details?

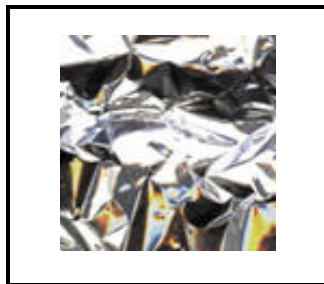
CAPTURE (SCAN)

- Choosing program to scan into: high end software for image editing: Photoshop, Fireworks, etc. (works together w/ import feature to activate system) (scan, img manip, saving)
- Check to see what software you have (scanning software only allows you to work w/ in scanning program)
- Preview stage: initial “peek” at what your image will look like—still another step (wait to completely finish preview scan)
- Set resolution: 72 dpi mac/web/ppt 96/72 dpi pc
- 200 dpi print: larger resolution, larger file size
- 2 x resolution = 4 x file size, text 300 dpi
- Physical dimensions: cropping and scaling – larger physical dimensions = larger file size
- File format: use compressed file format: jpg (small file size) or gif for image file / tif (printed image)

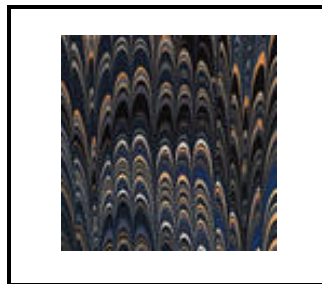
SCANNING OBJECT SAMPLES



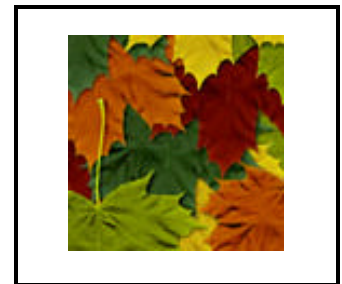
Ever tried scanning coffee beans?



Here's a sample of a tin foil scan



You can scan decorative paper



Even try leaves from your yard!

GLOSSARY

Alpha Channel In Photoshop, stored mask and selection data in an image.

Anti-aliasing A method of adding pixels of intermediate colors along the edges of images to get smoother transition from one color to another

Bit Depth The measure of the number of colors that a monitor is capable of displaying at one time.

Channels A storage place for fundamental components of any Photoshop image. There are 5 types, used for different things: Color, Mask, Quick Mask, Layer Mask, and Alpha channels.

Crop The process of removing unwanted areas from around an image or printed page.

Dithering A method of simulating unavailable colors by using patterns of available colors to create the appearance of continuous tone.

Gamma Adjustment The shifting of the middle values of an image along a curve so that the shadows or highlights are compressed.

Gamut Possible range of colors available to an input, display, or output device.

Histogram Displays a picture that represents the tonal range of a picture.

Hue Pure colors along the spectrum with no black or white added.

EDIT

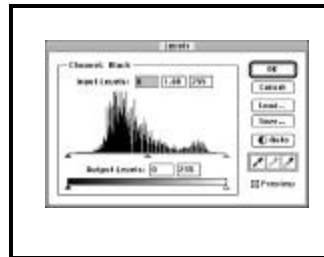
COMMON FILE FORMATS

- PICT** (*.pict) Default Picture file format used primarily for Macintosh image files. Usually large in memory.
- BMP** (*.bmp) Bitmap is a graphic image consisting of a matrix of dots (pixels). Photoshop images are bitmapped images.
- TIFF** (*.tif) Tagged Image File Format. File format used in printing and page layout applications. Larger than GIF/JPEG
- PNG** (*.png) Portable Network Graphics. Alternative to GIF's, currently have limited support.
- GIF** (*.gif) Graphic Interchange Format.. Popular for Web graphics. Supports transparency. Limited to 256 colors.
- JPEG** (*.jpg) Joint Photographic Experts. Popular for Web graphics. Use for photos and continuous-tone bitmap images.

IMAGE MANIPULATION SAMPLE



Classic sepia photo scan



Histogram function (Photoshop)



Enhance tonal range (Photoshop)

CREATIVE TIPS

- Save copy of original image as backup
- Best practice: manipulate images at 100%
- Remember, there is always "UNDO"

GLOSSARY

Image Size The physical dimensions of an image.

Layer A transparent overlay in a document that allows you to isolate various portions of your image to allow the user to edit one layer without disturbing the other layers.

Layers Palette Provides you with tools to control the management and characteristics of layers

Levels The grey values on a scale of 0 (black) to 255 (white).

Line Art Black and white art with no grey values.

LPI Lines per inch, the resolution of the halftone screen.

Marquee A tool that draws a broken line outline around an object when the object has been selected

Mask Consists of selecting an area in an image so that the area alone can be altered by an effect. Conversely, an **inverse mask** will allow the area outside of the mask to be modified by the application of an effect.

Noise Pixels added randomly to an image to give it the appearance of graininess.

OCR Optical Character Recognition. Software that allows users to scan and recognize printed text then convert images into electronic form to be directly edited in word processors or other similar software.

Pixel A single dot on a computer display.

PPI Pixels Per Inch; the resolution of a bitmapped image or image on computer.

RGB Color Red, Green, and Blue Color; The color displayed on a computer's monitor by adding different quantities of red, green, and blue light to create a wide range of possible color.

Saturation The pureness of a color. Adding white or black to a color lowers its saturation.

Scaling The process of changing the horizontal or vertical size of a selection.

Shear In painting and drawing programs, the action of slanting an object along a specific axis.

Unsharp Mask A filter used to accurately sharpen image detail

FINAL TIPS

Don't forget these tips:

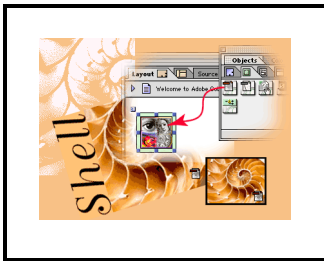
- Use websites to find samples
- Look at books for ideas
- Manuals have clues
- Call tech support!
- Online learning companies offer classes on all of these applications.
- Check your local phone directory for courses!

SAVE YOUR FILES

When you're ready to save:

- Save multiple versions so you always have an original to revert back to.
- File management: save images to the same file folder as your word documents if you will use the images in your document production.
- Exporting to email: don't forget if you are without anything else (ie: without an application, you can always move your files through email!)
- Files that are too large to send may need to be zipped up through a program called 'winzip', available on most computers.

VISUALS



Combine all your tools for one, great effect!



Two scans combine into a Photoshop phenomenon!

MY NOTES

RESOURCES

Photoshop:

www.adobe.com

www.educationalmultimedia.com

Adobe Photoshop Master Class by Paul Caponigro

Adobe Photoshop 6.0 Classroom in a Book (with CD-ROM)

Macromedia Fireworks:

www.macromedia.com

Fireworks 4 for Windows and Mac: Visual Quickstart Guide by Sandee Cohen

PaintShop Pro:

Sam's Teach Yourself PaintShop Pro 5 in 24 Hours

www.grafx-design.com

www.pspug.org

Corel Draw:

www.corel.com/support.options.tips.htm

www.grafx-design.com

Digital Cameras:

Varies based on camera.

<http://members.tripod.com/~tawha/thumbhlp.zip>

General:

www.ehandson.com